

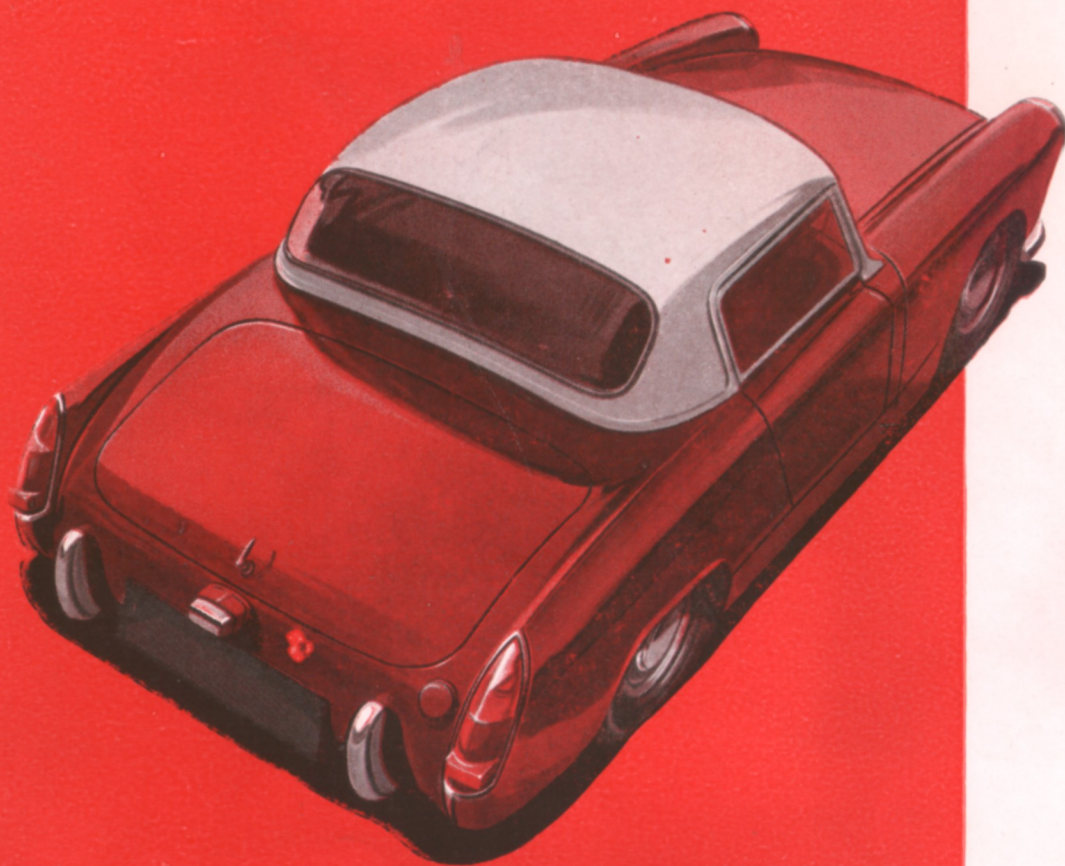
P R E L I M I N A R Y

SPECIFICATION

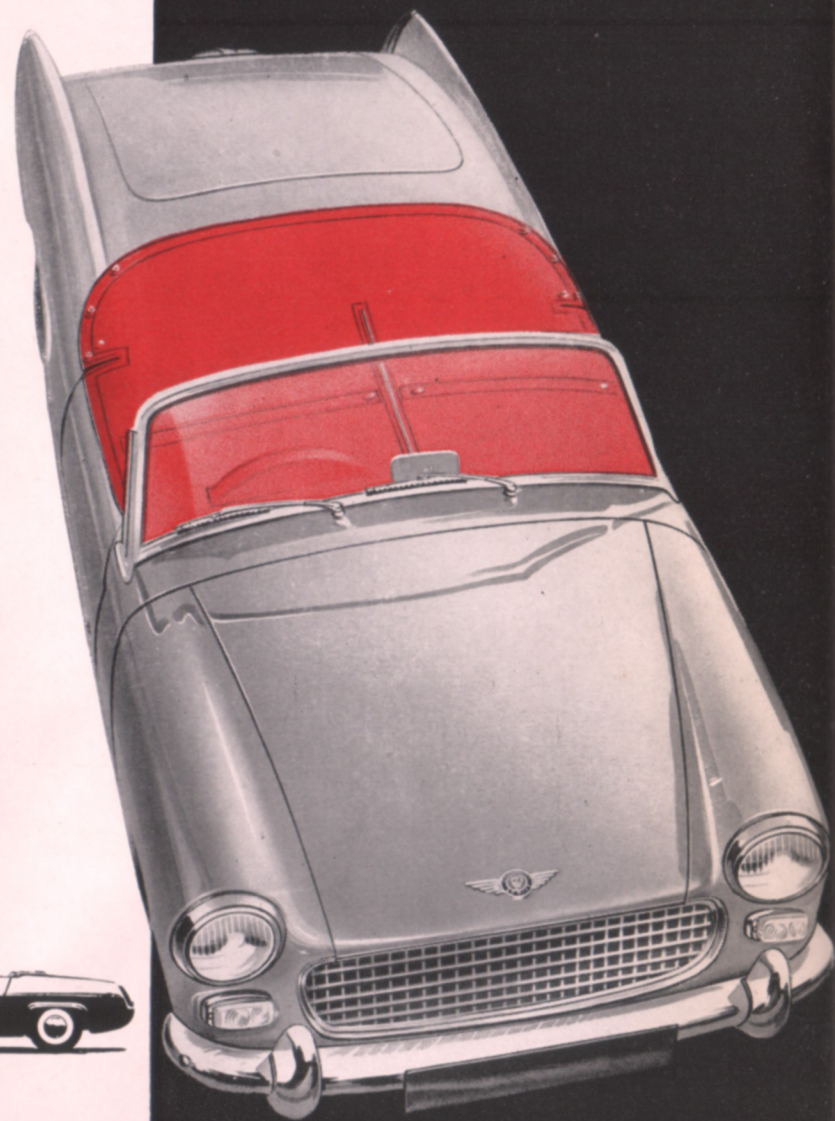


Austin Healey

SPRITE MK II

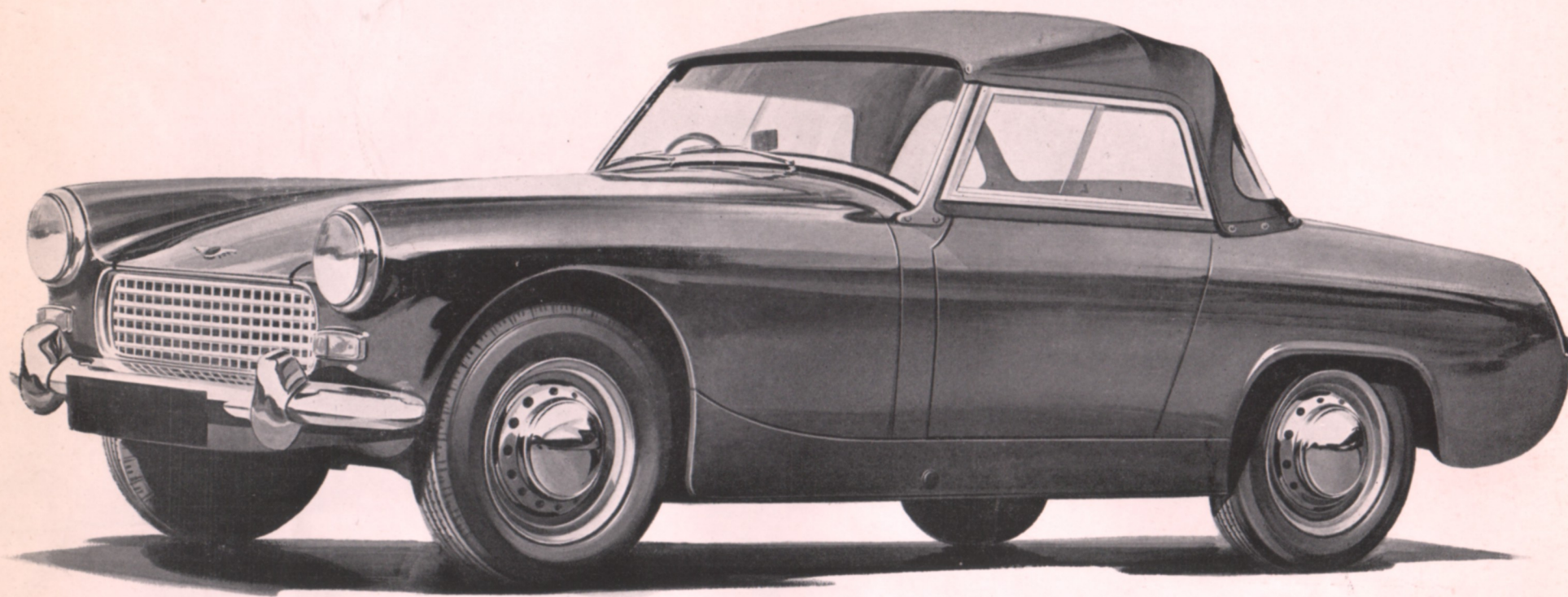


Arrangement of rear bumper and overriders, which, together with front bumper and overriders, is standard equipment on all export vehicles.

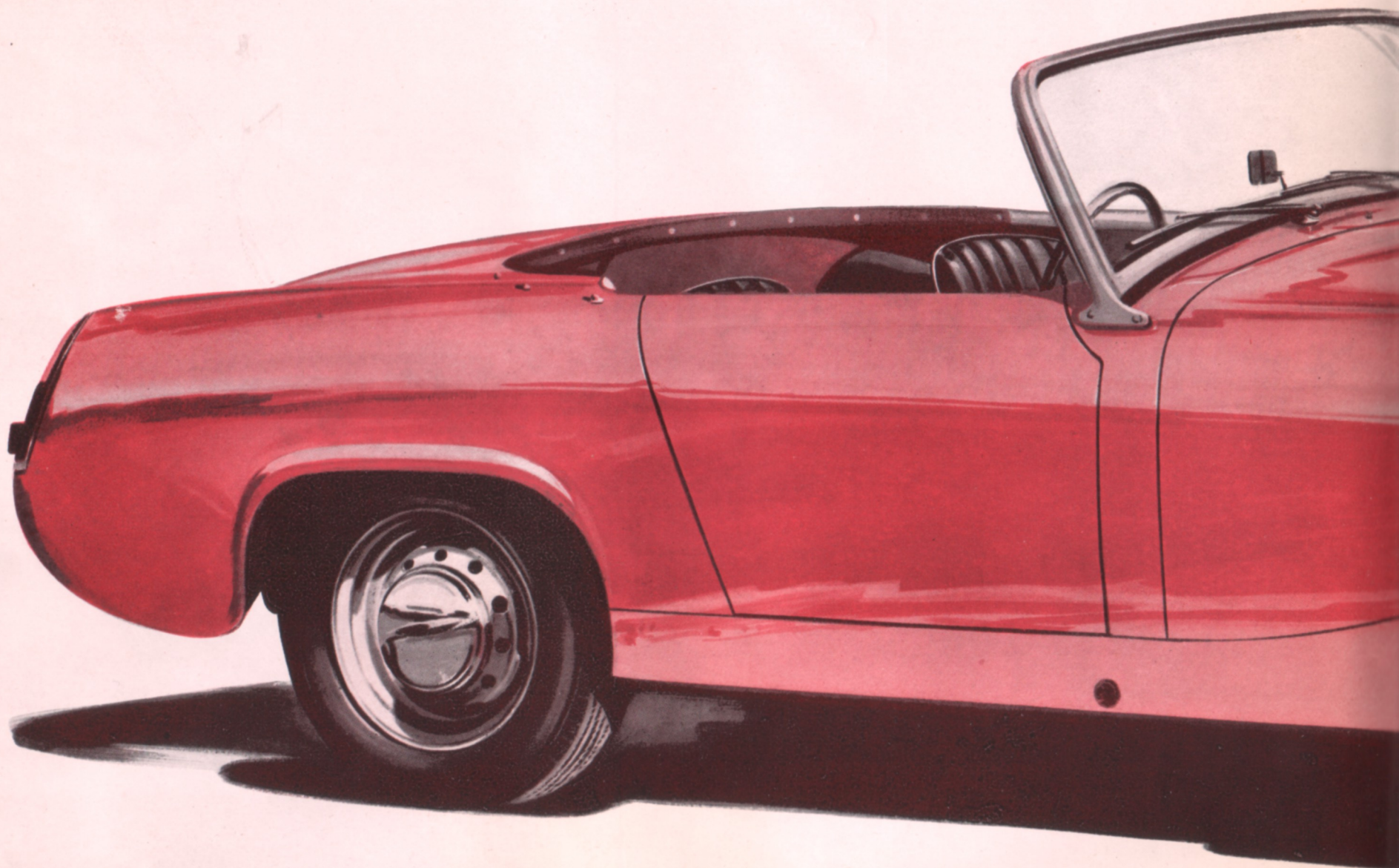


Austin Healey

SPRITE MK II



STYLE AND PERFORMANCE ... WITH SOFT OR HARD TOP



Austin Healey

SPRITE MK II



specification

ENGINE

Four cylinders, overhead valves ; bore 2.48 in. (62.9 mm.) ; stroke 3.00 in. (76.2 mm.) ; cubic capacity 57.87 cu. in. (948 c.c.) ; compression ratio 9 : 1 ; B.H.P. 46.5 at 5,500 r.p.m. (50 gross) ; maximum torque 52.5 lb. ft. at 2,750 r.p.m.

Lubrication : Concentric gear-type pump driven by camshaft forces filtered oil to all working parts ; sump capacity 6 pints (3.41 litres) plus 1 pint (0.57 litre) for full flow filter.

Cooling : Pressurised radiator with centrifugal pump and fan ; circulation controlled by thermostat ; approximate capacity 10 pints (5.7 litres).

Fuel System : Twin S.U. type H.S.2 semi-downdraught carburettors, fitted with paper element type air cleaners ; camshaft driven mechanical fuel pump ; fuel-capacity 6 gallons (27.28 litres).

Ignition : Coil, and distributor with automatic and vacuum control.

CHASSIS

Clutch : Single dry plate $6\frac{1}{4}$ in. (0.16 mm.) diameter ; hydraulically operated by pendent pedal.

Gearbox : Four speed, with synchromesh on second, third and top speeds ; ratios—first 3.2, second 1.916, third 1.357, top 1.00, reverse 4.114 : 1 ; remote control gear lever centrally mounted on floor ; oil capacity $2\frac{1}{2}$ pints (1.33 litres).

Propeller Shaft : Open, with needle-roller bearing universal joints ; sliding splines in gearbox.

Rear Axle : Three-quarter floating, with hypoid bevel crown wheel and pinion ; ratio 4.22 : 1 ; oil capacity $1\frac{3}{4}$ pints (1 litre) ; overall gear ratios—first 13.5, second 8.08, third 5.72, top 4.22, reverse 17.38 : 1.

Steering : Rack and pinion ; two-spoke 16 in. (0.41 m.) diameter steering wheel.

Suspension : Front—independent with coil springs and wishbones. Rear—quarter-elliptic leaf-springs. Hydraulic shock absorbers front and rear.

Brakes : Hydraulic two-leading-shoe type, operated by pendent pedal. Pull-up handbrake lever operates on rear wheels through compensator. Dimensions—7 in. x $1\frac{1}{4}$ in. (178 mm. x 31.8 mm.).

Wheels and Tyres : Pressed steel ventilated disc type wheels with four-stud-fixing ; 5.20—13 four-ply tubeless tyres.

ELECTRICAL

12-volt generator and starter motor ; 38 amp. hr. capacity battery at 10 hour rate ; double-dipping headlamps, with sealed beam light units and foot-operated dipswitch ; sidelamps combined with front amber flashers ; twin stop/tail lamps, red reflectors and amber flashers combined in one unit ; rear number plate lamp with twin bulbs ; warning lamps on fascia to indicate flashers working, generator not charging and headlamps high-beam position ; twin windscreen wipers ; single horn ; combined ignition and lighting switch.

INSTRUMENTS

Speedometer with trip and total mileage recorder, fuel gauge ; combined oil pressure and water temperature gauges.

BODYWORK

Two-door, two-seater sports car of all-steel mono-construction integral with frame and floor. Rear hinged bonnet with lock controlled from inside car. Luggage compartment has lockable lid. Curved, toughened glass windscreen in polished aluminium frame ; detachable sliding side screens. Interior trim, including fascia, in vinyl-treated fabric, with fitted carpet in rear compartment. Driver's seat adjustable fore and aft, both seats have foam rubber cushions with rubberised hair squabs. In-built fittings for safety harness (harness is approved accessory available through B.M.C. Service Ltd.). Floor covered with rubber mats. Each door is fitted with an internal release lever and has an open pocket. Spare wheel secured horizontally in luggage compartment. Vinyl-treated fabric hood fully detachable, and, together with hoodsticks and sidescreens, can be stowed in luggage compartment in special bags provided. Chrome overriders attached to rear of body. Passenger's grab handle. Interior rear view mirror.

Colour Finishes :	Body	Trim	Hood
	Signal Red.	Red or Black.	Black.
	Speedwell Blue.	Blue.	Dark Blue.
	Deep Pink.	Black.	Black.
	Old English White.	Black or Red.	Grey.
	Highway Yellow.	Black.	Black.

Radio ; heater and demisters ; fresh air unit ; tonneau cover and rail ; laminated windscreen ; locking fuel filler cap ; cigar lighter ; wing-mounted mirror ; wheel discs ; detachable fibreglass hard top ; white-wall tyres ; heavy duty tyres ; twin horns ; luggage carrier.

OPTIONAL EXTRAS

De-Luxe Model and Export Availability

The preceeding specification covers the Basic Model for the Home Market.

To satisfy world market requirements the following items are included as standard equipment on all Export versions, also the Austin-Healey Sprite Mk. II. De-Luxe Model for the Home Market.

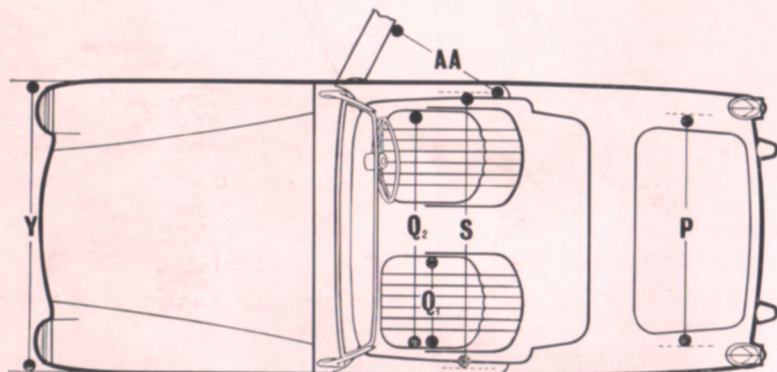
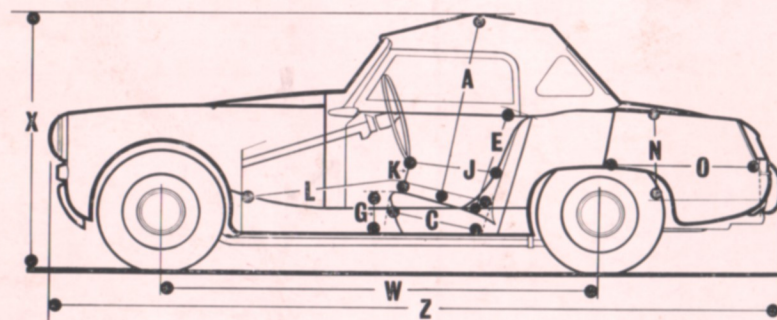
Front and rear bumpers with overriders ; revolution counter ; windscreen washer ; adjustable passenger's seat.

Certain variations from this specification are available for Export at no extra charge—namely :

Right- or left-hand steering ; m.p.h. or k.p.h. speedometer ; headlamp and flasher equipment to suit any overseas territory.

Optional equipment at extra cost is as follows : Radio ; heater and demisters ; fresh air unit ; tonneau cover and rail ; laminated windscreen ; locking fuel filler cap ; cigar lighter ; wing mounted mirror ; wheel discs ; detachable fibreglass hard top ; white-wall tyres ; heavy duty six-ply rated tyres ; twin horns ; luggage carrier.

LEADING DIMENSIONS



AA 2ft. 2in. (0.66 m.)	A 2ft. 10½in. (0.88 m.)	C 1ft. 7in. (0.48 m.)	E 1ft. 7in. (0.48 m.)
G 8½in. (0.22 m.)	J (min.) 1ft. 1½in. (0.35 m.)	J (max.) 1ft. 5½in. (0.44 m.)	K 5in. (0.13 m.)
L (min.) 3ft. 5in. (1.04 m.)	L (max.) 3ft. 8½in. (1.13 m.)	N 1ft. 3½in. (0.39 m.)	O 2ft. 3½in. (0.70 m.)
P 3ft. 6in. (1.07 m.)	Q₁ 1ft. 5in. (0.43 m.)	Q₂ 3ft. 8½in. (1.12 m.)	S 4ft. 0½in. (1.23 m.)
W 6ft. 8in. (2.03 m.)	X (Hood raised) 4ft. 1½in. (1.26 m.)	X (Hood lowered) 3ft. 7in. (1.09 m.)	Y 4ft. 5in. (1.35 m.)
Z 11ft. 0½in. (3.37 m.)	Z (With front & rear bumpers & overriders) 11ft. 5½in. (3.50 m.)	Track (Front) 3ft. 9½in. (1.16 m.)	Track (Rear) 3ft. 8½in. (1.14 m.)
Turning Circle 32ft. (9.75 m.)	Approx. Weight 11 cwt. 3 qr. (597 kg.)		

The goods manufactured by The Austin Motor Company Limited are supplied with an express Warranty which excludes all warranties, conditions and liabilities whatsoever implied by Common Law, Statute or otherwise. **PRICES.**—The Company reserves the right to vary the list prices at any time. **SPECIFICATION.**—The Company reserves the right on the sale of any vehicle to make before delivery, without notice, any alteration to or departure from the specification, design or equipment detailed in this publication. Such alterations are likely to occur at any time.

THE AUSTIN MOTOR COMPANY LIMITED
LONGBRIDGE - - - - - BIRMINGHAM

AUSTIN MOTOR EXPORT CORPORATION LIMITED
LONGBRIDGE - - - - - BIRMINGHAM - - - - - ENGLAND

