

*Austin of England*

AUSTIN HOUSE

27-29 WEST 57th STREET

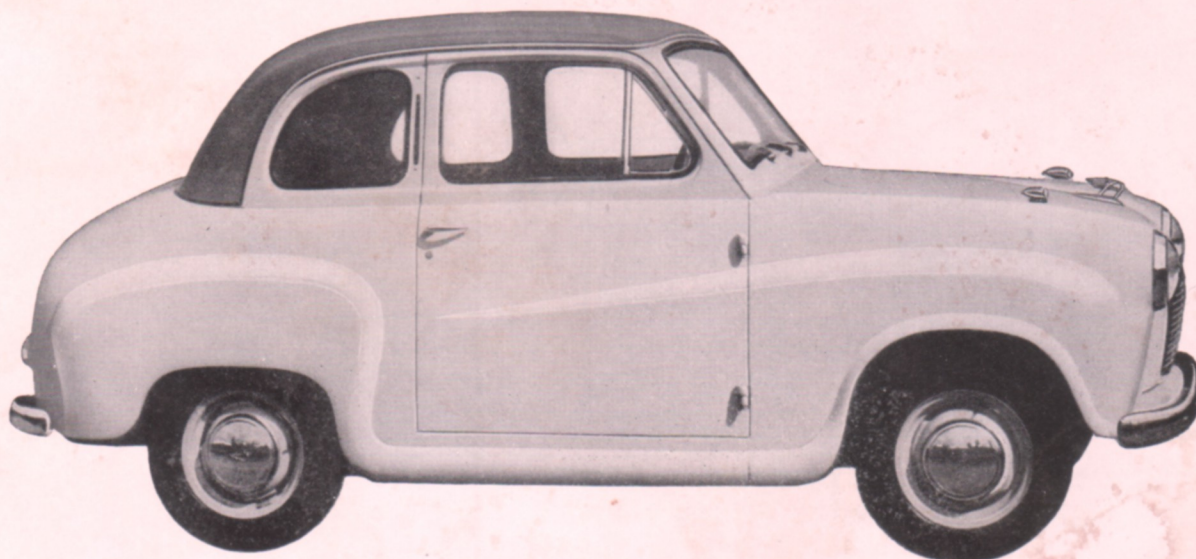
NEW YORK 19, N. Y.

MURRAY HILL 8-6350



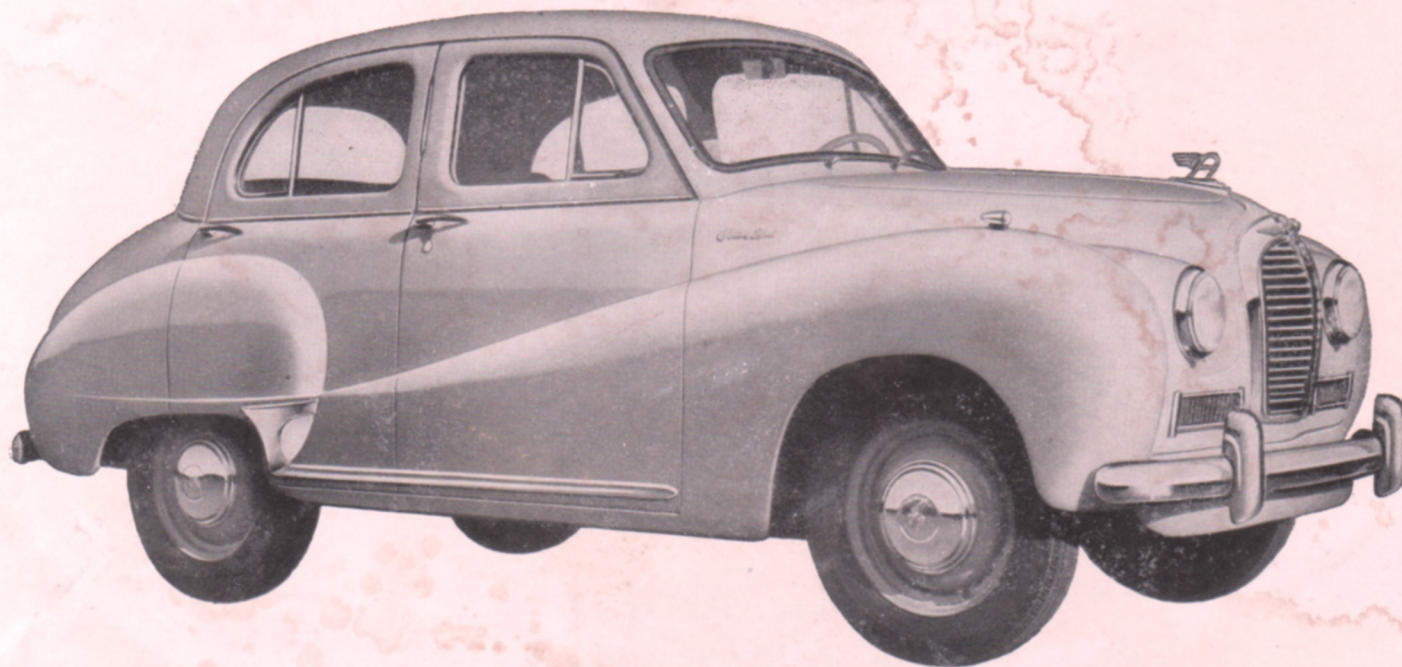
# Drive a '54 Austin

See the extra value these Austins



**New Austin A-30 two-door sedan** delivers up to 40 miles per gallon, cuts your operating costs 50% and more. You get all the prestige of an English car,

and yet the Austin A-30 sells for only **\$1395** at port of entry, including all Federal taxes. Four-door model available for slightly more.



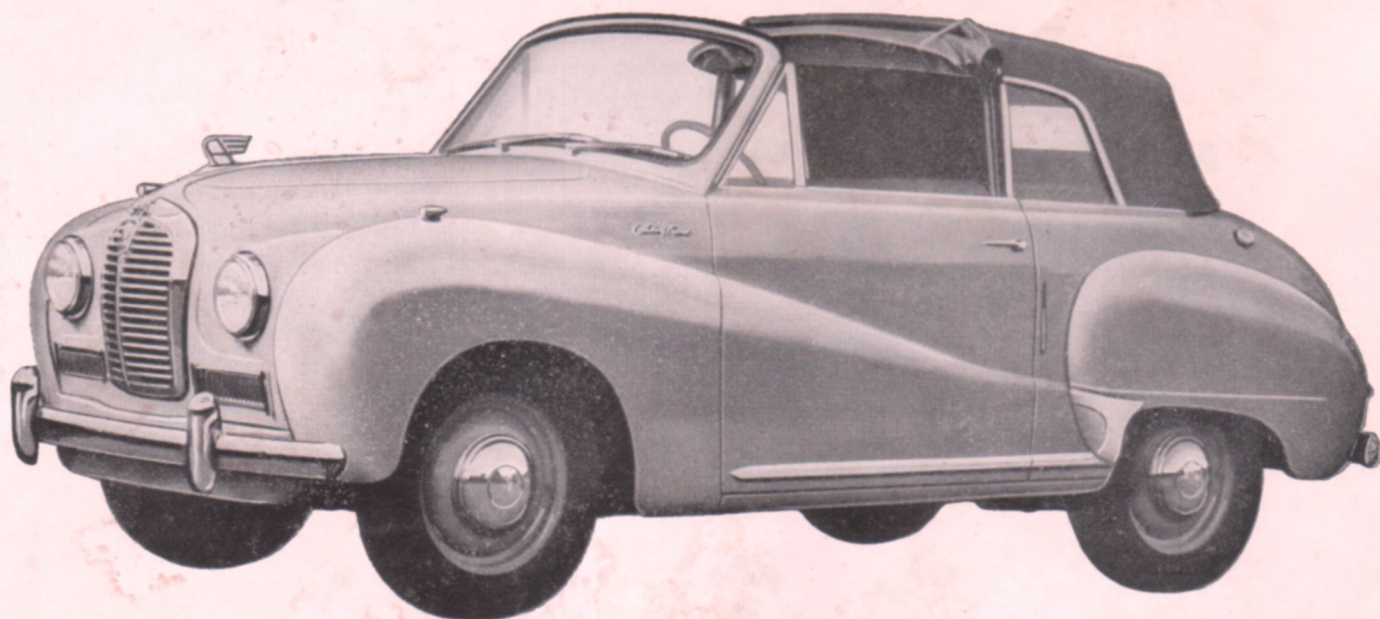
**New Austin A-40 Sedan** gives you up to 35 miles per gallon. Cruises at 65 m.p.h. and cuts operating costs 50%. Model shown costs only **\$1695** includ-

ing all Federal taxes. Deluxe model has even more custom extras including heater and leather upholstery, and sells for \$1795 at port of entry.



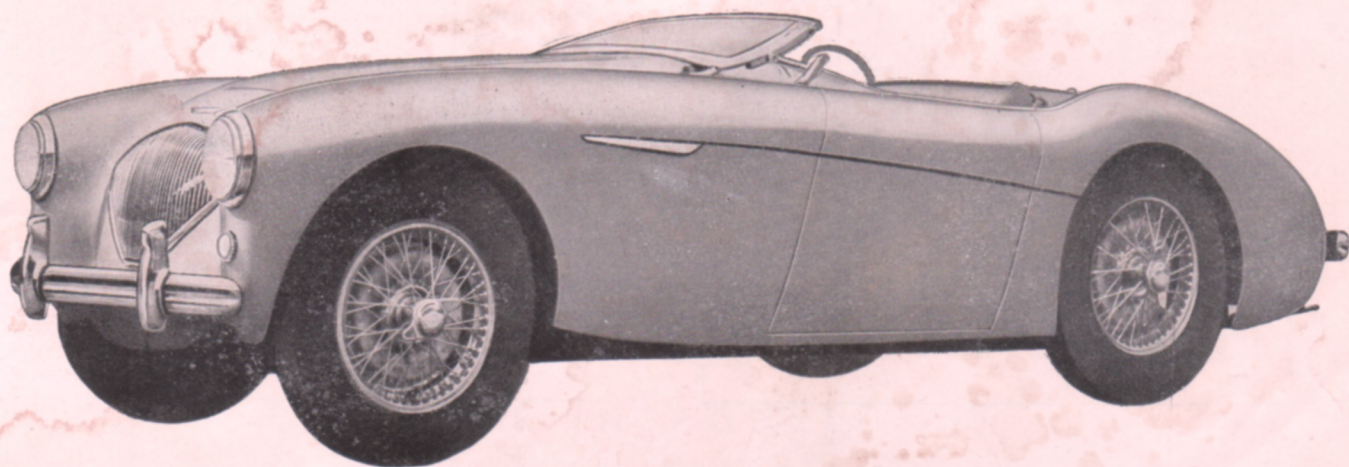
# in for only \$1395

s offer you in every price range.



**New Austin A-40 Convertible** can be driven with the top open, closed or in smart "Coupe de Ville" manner as shown above. This distinguished con-

vertible has \$250 worth of free custom extras at no extra cost and it sells for only **\$1945\***. This price includes the heater and all Federal taxes.



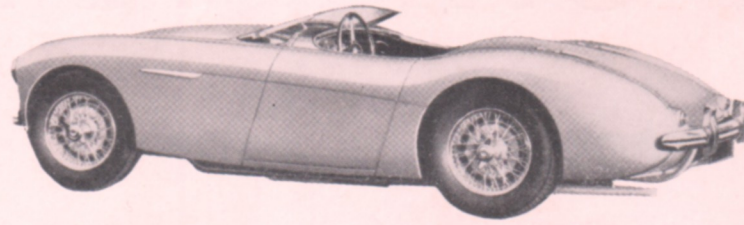
**New Austin-Healey "100"** is world's fastest production car under 3,000 cc. It has almost every custom extra you can think of, including overdrive, ta-

chometer, wire wheels and tonneau cover, at no extra cost! Price is only **\$2985\*** including heater and all Federal taxes. *\*(all prices F.O.B. coastal port of entry)*



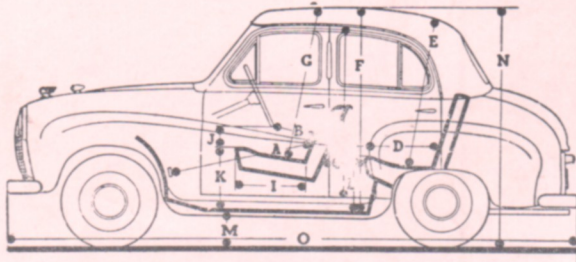
# GENERAL SPECIFICATIONS

## "AUSTIN HEALEY 100"



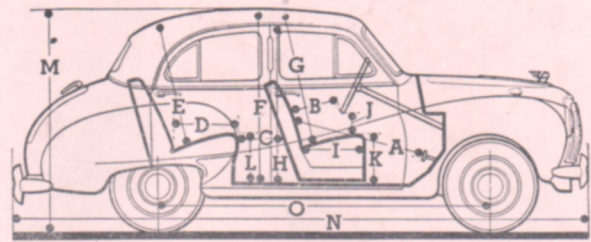
**OVERALL DIMENSIONS:** Wheelbase 90 in.; tread at front 49 in.; tread at rear 50¾ in.; overall length 151½ in.; overall width 60½ in.; height over scuttle 35¾ in.; height over windshield 47¼ in.; height over top 49 in.; ground clearance 5½ in.; turning circle 35 feet; approximate kerb weight 2,176 lb.

### A-30 "SEVEN" SEDAN



LEADING DIMENSIONS	Inches
Pedal to Seat Squab .. .. . A	36
Steering Wheel to Seat Squab .. .. . B	11½
Distance between Seats .. .. . C	6½
Rear Seat Cushion Depth .. .. . D	17½
Height over Rear Seat .. .. . E	35½
Maximum Interior Height .. .. . F	49
Height over Front Seat .. .. . G	35½
Height of Door Opening .. .. . H	37½
Front Seat Cushion Depth .. .. . I	19
Front Seat Cushion Width .. .. . J	18
Steering Wheel to Cushion .. .. . K	5
Front Seat Cushion above Floor .. .. . L	15½
Rear Seat Cushion above Floor .. .. . M	14
Minimum Height—Floor to Ground .. .. . N	11
Overall Height .. .. . O	58½
Overall Length .. .. .	136½
Overall Width .. .. .	55½
Scuttle Width .. .. .	46½
Body Width between Center Pillars .. .. .	47
Rear Seat Width .. .. .	35½
Body Width over Rear Seat .. .. .	45
Wheelbase .. .. .	79½
Tread—Front (at ground level) .. .. .	45½
Tread—Rear .. .. .	44½
Ground Clearance .. .. .	6½
Turning Circle .. .. .	35 feet
Luggage Compartment—Height of Opening .. .. .	16
Luggage Compartment—Minimum Width of Opening .. .. .	30½
Luggage Compartment—Depth .. .. .	18
Approximate Weight (Curb) .. .. .	1,484 lb.

### A-40 "SOMERSET" SEDAN



LEADING DIMENSIONS	INCHES
Pedal to Seat Squab .. .. . A	41
Steering Wheel to Seat Squab .. .. . B	34
Distance between Seats .. .. . C	17
Rear Seat Cushion Depth .. .. . D	10
Height over Rear Seat .. .. . E	14
Maximum Interior Height .. .. . F	7
Height over Front Seat .. .. . G	47
Minimum Height of Door Opening .. .. . H	36½
Front Seat Cushion Depth .. .. . I	43
Steering Wheel to Seat Cushion .. .. . J	18½
Front Seat Cushion above Floor .. .. . K	5½
Rear Seat Cushion above Floor .. .. . L	13½
Overall Height .. .. . M	14½
Overall Length .. .. . N	64
Wheelbase .. .. . O	159½
Overall Width .. .. .	92½
Body Width between Center Pillars (at waist) .. .. .	63
Front Seat Cushion Width (max.) .. .. .	48
Rear Seat Cushion (width) .. .. .	22
Maximum Width over Rear Seat .. .. .	39½
Tread, front, at ground level .. .. .	47
Tread, rear .. .. .	48 ¼
Ground Clearance .. .. .	50
Turning Circle .. .. .	7½
Luggage Compartment—Height of Opening .. .. .	37 feet
Luggage Compartment—Width of Opening .. .. .	20
Luggage Compartment—Maximum Depth .. .. .	31½
Luggage Compartment—Approx. Capacity .. .. .	36½
Luggage Carrier Load .. .. .	10 cu. ft.
Curb Weight .. .. .	112 lb.
	2,142 lb.

**SPECIFICATION**—The Company reserves the right on the sale of any vehicle to make before delivery without notice any alteration to or departure from the specification, design or equipment detailed in this publication. Under present supply difficulties such alterations are likely to occur at any time.